



# **Races and Biovar Characterization of *Ralstonia solanacearum* Causing Bacterial Wilt Disease of Potato**

**Bhavesh M. Joshi <sup>a\*</sup>, Mrugesh M. Patel <sup>a</sup>, Rudra B. Parmar <sup>a</sup>,  
Yashvi R. Patel <sup>a</sup>, N. K. Singh <sup>a</sup>, P. V. Tapre <sup>a</sup>, Jyotika Purohit <sup>b</sup>,  
A. Chattopadhyay <sup>b</sup>, Vineet Kaswan <sup>c</sup> and Yogesh R. Patel <sup>d</sup>**

<sup>a</sup> Department of Microbiology, Chimanbhai Patel College of Agriculture, Sardarkrushinagar Dantiwada Agricultural University, Sardarkrushinagar-385506, Gujarat, India.

<sup>b</sup> Department of Plant Pathology, Chimanbhai Patel College of Agriculture, Sardarkrushinagar Dantiwada Agricultural University, Sardarkrushinagar-385506, Gujarat, India.

<sup>c</sup> Department of Biotechnology, College of Basic Science and Humanitie, Sardarkrushinagar Dantiwada Agricultural University, Sardarkrushinagar-385506, Gujarat, India.

<sup>d</sup> Department of Microbiology, College of Basic Science and Humanitie, Sardarkrushinagar Dantiwada Agricultural University, Sardarkrushinagar-385506, Gujarat, India.

## **Authors' contributions**

*This work was carried out in collaboration among all authors. All authors read and approved the final manuscript.*

## **Article Information**

DOI: 10.9734/IJECC/2023/v13i123770

## **Open Peer Review History:**

This journal follows the Advanced Open Peer Review policy. Identity of the Reviewers, Editor(s) and additional Reviewers, peer review comments, different versions of the manuscript, comments of the editors, etc are available here: <https://www.sdiarticle5.com/review-history/111181>

**Original Research Article**

**Received: 16/10/2023**

**Accepted: 22/12/2023**

**Published: 24/12/2023**

## **ABSTRACT**

*Ralstonia solanacearum*, the causative agent of brown rot/bacterial wilt, is a major cause of severe potato illnesses in many impoverished nations located in tropical and subtropical regions of the world. When it occurs, the disease is to blame for significant losses to the potato industry. The illness has the potential to completely destroy a crop and stop using a piece of land for potato cultivation for a number of years. A survey was carried out to investigate the extent of *Ralstonia solanacearum*-caused bacterial wilt of potato crops in important potato-growing talukas in the

\*Corresponding author: E-mail: joshibhavesh365@gmail.com;

Banaskantha district of Gujarat, India, including Deesa, Dantiwada, Palanpur, and Amirgadh. The frequency of bacterial wilt disease in potatoes is rather low in this region. Four talukas were utilised to identify ten isolates (RsSt1 to RsSt10) of *R. solanacearum*, which were then used to determine the biovar and race. Gram-negative rod-shaped cells were present in the isolates of *R. solanacearum*. On TZC agar medium, these isolates developed colonies that were creamy or dull white in colour with a hint of pink or red in the centre. The oxidation of disaccharides (sucrose, lactose, maltose) and sugar alcohols (mannitol, sorbitol, and dulcitol) by *R. solanacearum* isolates was used to determine the biovar characteristics. This revealed that, of the ten isolates, eight were classified as bv2, and the two remaining isolates (RsSt5 and RsSt7) belonged to bv2T. The pathogenicity test conducted on tobacco, tomato, and brinjal allowed for the race identification of *R. solanacearum* isolates, which were classified as race 3 due to their limited host range and ability to exclusively elicit wilt symptoms in potatoes and tomatoes. As a result, Races 3 and bv2 and bv2T were represented among the *R. solanacearum* isolates that caused bacterial wilt of potatoes in the Banaskantha district.

**Keywords:** Brown rot/Bacterial wilt; *Ralstonia solanacearum*; biovar; races; potato.

## 1. INTRODUCTION

*Ralstonia solanacearum* is a chemoorganotroph, rod-shaped, strictly aerobic, Gram-negative bacterium that ranges in size from 0.8 to 2.0  $\mu\text{m}$  [1-2]. One of the world's most devastating plant infections in tropical, subtropical, and mild temperate climates is *R. solanacearum*, which has been documented from six of the seven continents (Antarctica excepted). It affects around 450 plant species spread over 54 botanical families, including potatoes, and has a wide host range [3].

Previously, strains of *R. solanacearum* were classified into six biovars and five races based on how differently they could produce acid from a panel of carbohydrates and the spectrum of hosts, respectively [4]. The geographic ranges and host ranges of the five races of *R. solanacearum* vary. Race 1 is an ill-defined group that is native to Asia, Africa, and South America in addition to the southern United States. It has a very wide host range. Race 2 is primarily widespread in Southeast Asia and Central America and affects bananas [5-6]. Race 3 is found all over the world and is mostly connected to potatoes. In much of Asia and Hawaii, race 4 affects ginger, and race 5 affects mulberries in China [7].

The brown rot/bacterial wilt disease that affects solanaceous crops is endemic in parts of India's west coast, ranging from Thiruvananthapuram in Kerala to Khera in Gujarat, Karnataka, western Maharashtra, Madhya Pradesh, and Uttarakhand, as well as in the eastern plains of Assam, Odisha, and West Bengal, the Chhota Nagpur plateau, the Andaman and Nicobar

Islands, and more. Gujarat's agricultural economy is based on the usage of more than half of the state's land for agricultural purposes. Agriculture is the main factor influencing employment and growth in rural areas [8-9]. As per 3<sup>rd</sup> advance estimate of DA&FW (2021-22), Gujarat stands fourth in the total potato production in India with 3.70 million tonnes of potatoes from 0.13 million ha area with average productivity of 28.46 t/ha. In Gujarat out of their total 33 districts Banaskantha has become one of the leading district in potato production. As per final forecast reports of AFW&CD, Govt. of Gujarat (2020-21), Banaskantha produces around 1.85 million tonnes of potatoes from 0.06 million ha area with average productivity of 30.84 t/ha.

Potato (*Solanum tuberosum* L.), a member of the Solanaceae family, is a vitally important starchy food crop around the world, popularly known as the "Poor Man's Friend" or "King of Vegetables" because of its high protein content and digestible calories [10]. Globally, almost one billion people consume potatoes (FAO, 2008) [11]. Compared to cereals like rice and wheat, it produces more dry matter and edible energy in a shorter amount of time because it is a short-duration crop. It is a good crop for use as a vegetable and may be prepared in more than 100 ways [12]. Potato protein is considered to be better than milk protein and has a higher biological value than cereal protein. Potatoes are a great complement to meat and dairy products since they lower energy consumption and food costs [13-14]. It is now a common meal for the masses to have for breakfast, lunch, and dinner. The cultivar, growth environment, and fertilisation schedule all affect the potato's makeup [15].

## 2. METHODOLOGY

### 2.1 Examining and Gathering Wilted Potato Plants

A survey was conducted to determine the extent of potato bacterial wilt in Banaskantha district of Gujarat in terms of per cent incidence in some selected talukas/tehsil viz, Deesa, Dantiwada, Palanpur and Amirgadh during winter 2021. To determine the percentage of bacterial wilt occurrence, at least five villages in each taluka and five farmer's fields from each village were surveyed. For a prompt field diagnosis, the streaming of milky white masses of bacterial cells (ooze) indicated the disease is bacterial wilt caused by *R. solanacearum*. Every examined hamlet provided at least ten samples of sick plants, which were then taken to the departmental laboratory to isolate several *R. solanacearum* isolates.

### 2.2 Evaluation of the Percentage of Disease Occurrence

The percentage of the disease that is affected by potato bacterial wilt was surveyed. For every village and taluka, data on the incidence of wilt was collected at least three times from five different farmer's fields. Next, the wilt incidence as a percentage was determined using the following formula:

$$\% \text{ Wilt incidence} = \frac{\text{Number of wilted plants in each field}}{\text{Total number of plants in each field}} \times 100$$

### 2.3 Sterilization of Samples and Isolation of *Ralstonia Solanacearum*

Samples of wilted potato plants were taken from the farmer's fields, and they were carefully cleaned using running tap water for 10-15 minutes to remove sand and soil particles. After five minutes of washing in 0.1% mercuric chloride (HgCl<sub>2</sub>) and rinsing in sterile distilled water, these plant pieces were surface sterilised. The plant components were then treated with 70% ethanol for two to three minutes, and then they were cleaned with sterile distilled water.

Using a flame-sterilized scalpel, the cut ends of the surface-sterilized segments were removed and put on petriplates containing triphenyl

tetrazolium chloride (TZC). For 48–72 hours, the petriplates were incubated at 28±1°C to allow the bacteria to grow on the medium. After being selected, the lone colony of bacteria with a fluid, asymmetric, creamy white centre and a pink centre was placed onto the Nutrient Agar slants. For later usage, the cultures were kept on the Nutrient Agar slant and kept in storage at 4°C.

### 2.4 Identifying the Biovar

The ability of each *Ralstonia solanacearum* isolate to utilise the disaccharides (sucrose, lactose, maltose) and sugar alcohols (manitol, sorbitol, and dulcitol) generated by the Hicarbohydrate™ kit (KB009, HiMedia Laboratories, Mumbai) (Table 1) in accordance with standard protocol was used to separate the biovars [16-17].

### 2.5 Races Characterization

According to [18], the races of *R. solanacearum* isolated from potatoes were identified using the differential host of solanaceous crops, including tobacco, tomato, and brinjal. According to [19], the plants were grown in a mist house, and 48-hour-old *R. solanacearum* cultures containing 10<sup>8</sup> cfu/ml were injected into one-month-old tomato, brinjal, and tobacco plants (stem, leaf infiltration, and stem inoculation). The wilting of tomato, brinjal and tobacco plants was observed at regular interval.

## 3. RESULTS AND DISCUSSION

### 3.1 Disease Incidence of Brown Rot/ Bacterial Wilt

A survey was conducted in four important potato-growing talukas in the Banaskantha district of Gujarat to determine the prevalence rate of bacterial wilt in potatoes. On the other hand, mild cases of bacterial wilt infection were observed in Deesa, Dantiwada, Palanpur, and Amirgadh talukas. The survey results showed that the largest wilt incidence was reported in Deesa taluka, i.e., 3-5 per cent, followed by Dantiwada, Palanpur taluka (1-5 per cent) and lowest bacterial wilt of potato incidence detected in potato fields of Amirgadh taluka (0-3 per cent). In this study, the data on wilt disease incidence was recorded from those fields having wilt incidence. It was also noted that some fields are totally free from the wilt disease were not considered in this

**Table 1. Carbohydrates utilization patterns of *R. solanacearum***

Utilization of	Biovar of <i>R. solanacearum</i>					
	1	2	2T	3	4	5
Mannitol	-	-	-	+	+	+
Lactose	-	+	+	+	-	+
Dextrose	+	+	+	+	+	+
Trehalose	+	-	+	+	+	+
Maltose	-	+	+	+	-	+
D (+) Cellobiose	-	+	+	+	-	+
Dulcitol	-	-	-	+	+	-
Sorbitol	-	-	-	+	+	-

study. Furthermore, the diversity of *R. solanacearum* isolates and the differences in soil characteristics present in the various locations investigated may be to blame for these variances in the incidence of bacterial wilt disease. The large diversity of host plants affected by this pathogen, the phenotype and genotype of *Ralstonia solanacearum*, its extensive geographical distribution, and the range of environmental circumstances conducive to bacterial wilt have all been linked to variations in wilt incidence in potatoes [20–23].

### 3.2 Isolation of Plant Pathogenic *Ralstonia solanacearum*

From the samples of wilted potato plants, a total of ten isolates of *R. solanacearum* was isolated from different locations: five from Deesa, two from Dantiwada, two from Palanpur, and one from the taluka of Amirgadh. These isolates were retained and marked sequentially as RsSt1 to RsSt10. The failure to isolate the bacteria from every affected plant resulted in a different number of isolates even though the same number of samples were taken from each study location. After being incubated at 28°C for 24 to 48 hours, all of the isolates displayed fluidal, irregular, creamy white colonies with pink centres on TZC agar medium petriplates. The bacterial growth results on TZC medium that are reported here are comparable to those that have been reported by [24]. Based on colony features on TZC media, an isolate's virulence can be ascertained. Avirulent mutant colonies were butyrous, deep red, frequently with a bluish border, whereas virulent wild type colonies are typically big, raised, fluidal, and either totally white or with a pale red centre.

### 3.3 Biovar Determination of *Ralstonia solanacearum*

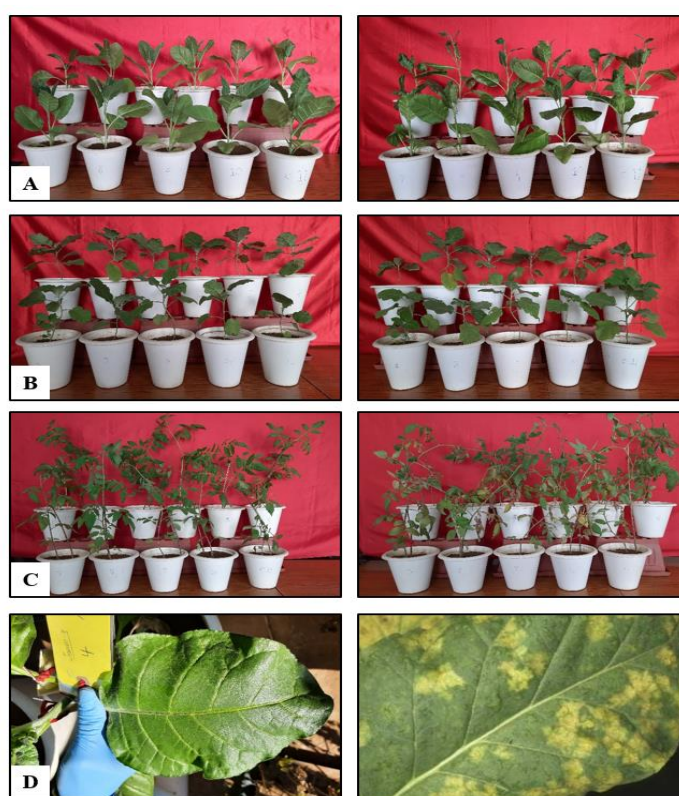
Using the Hicarbohydrate™ kit, all ten *R. solanacearum* isolates were classified into biovars based on the results of oxidised disaccharides (lactose, maltose, and sucrose) and sugar alcohols (manitol, sorbitol, and dulcitol). The well's hue change was an indication of the oxidation reaction. Four of the six biovars known to exist in the world—bv1, bv2, bv2T, and bv3—have been shown to infect potato plants in India [25]. In present study out of ten isolates of *R. solanacearum* eight isolates belonged to bv2; only two isolates (RsSt5 and RsSt7) belonged to bv2T. A recent work [26] described the differentiation of *R. solanacearum* biovars based on their utilisation of carbohydrates. Additionally, they found that biovar II only oxidises disaccharides, biovar I only oxidises hexose alcohols, and biovar IV only oxidises alcohols. Biovar III oxidises both disaccharides and hexose alcohols.

### 3.4 Characterization of Races

*Ralstonia solanacearum* isolates from potatoes were characterised based on their race using pathogenicity tests in a variety of hosts, including tobacco, tomato, brinjal, and potatoes (Kufri pukhraj). Ten *Ralstonia solanacearum* isolates were able to induce wilt symptoms in tomato and potato plants, but none of the isolates could induce wilt disease in tobacco or brinjal (Table 2 and Fig. 1). After one week of inoculation, all isolates were classified as race 3 because they failed to cause the tobacco wilt symptom and merely displayed chlorosis on the inoculated leaf of tobacco plants. Out of the 10 isolates used in the current investigation, all of the *R. solanacearum* isolates belonged to race 3.

**Table 2. Result of carbohydrate utilization of *R. solanacearum* isolates**

Utilization of	Isolates of <i>R. solanacearum</i>									
	RsSt1	RsSt2	RsSt3	RsSt4	RsSt5	RsSt6	RsSt7	RsSt8	RsSt9	RsSt10
Mannitol	-	-	-	-	-	-	-	-	-	-
Lactose	+	+	+	+	+	+	+	+	+	+
Dextrose	+	+	+	+	+	+	+	+	+	+
Trehalose	-	-	-	-	+	-	+	-	-	-
Maltose	+	+	+	+	+	+	+	+	+	+
D (+)										
Cellobiose	+	+	+	+	+	+	+	+	+	+
Dulcitol	-	-	-	-	-	-	-	-	-	-
Sorbitol	-	-	-	-	-	-	-	-	-	-



**Fig. 1. Characterization of races**

A-Tobacco plants; B-Brinjal plants; C-Tomato plants; D-Hypersensitivity reaction on tobacco leaves

### 3.5 Hypersensitivity Reaction

After 48 hours of inoculation, all isolates of *R. solanacearum* culture injected on tobacco leaves generate a yellowish discoloration of the infiltrating tobacco tissue, which progressively advances and is classified as race 3 since it is not pathogenic to tobacco.

There are five biovars and five pathogenic races of *R. solanacearum* known [27]. Race-1 affects tobacco, a number of other solanaceous crops,

and numerous hosts in other plant families. It is widespread in tropical regions of the world. Like races 2, 4, and 5, it has a high temperature optimum of 35°C [28]. Race-2 is primarily found in South America's tropical regions and targets Heliconia and bananas. Race-3 affects potatoes, tomatoes, and, on rare occasions, aubergine, capsicum, Pelargonium zonale, and higher altitudes in the tropics, subtropics, and temperate regions. It also affects various solanaceous weeds, including *Solanum nigrum* and *Solanum dulcamara* [29–30].

**Table 3. Determination of *Ralstonia solanacearum* races based on host range**

Isolates	Appearance of symptom					Biovar
	Potato	Tomato	Tobacco (Wilt/Necrosis)	Tobacco (Chlorosis)	Brinjal	
RsSt1	Wilting	Wilting	No reaction	Chlorosis	No reaction	bv2
RsSt2	Wilting	Wilting	No reaction	Chlorosis	No reaction	bv2
RsSt3	Wilting	Wilting	No reaction	Chlorosis	No reaction	bv2
RsSt4	Wilting	Wilting	No reaction	Chlorosis	No reaction	bv2
RsSt5	Wilting	Wilting	No reaction	Chlorosis	No reaction	bv2T
RsSt6	Wilting	Wilting	No reaction	Chlorosis	No reaction	bv2
RsSt7	Wilting	Wilting	No reaction	Chlorosis	No reaction	bv2T
RsSt8	Wilting	Wilting	No reaction	Chlorosis	No reaction	bv2
RsSt9	Wilting	Wilting	No reaction	Chlorosis	No reaction	bv2
RsSt10	Wilting	Wilting	No reaction	Chlorosis	No reaction	bv2

Note: Races 4 and 5, which are solely harmful to mulberries and are not mentioned here, are pathogenic to ginger and a few other hosts [31]

#### 4. CONCLUSION

The plant pathogen *Ralstonia solanacearum* exist in the soil of Banaskantha district and has potentiality to cause disease in potato and develop characteristic disease symptoms of brown rot/bacterial wilt. The species complex of *R. solanacearum*, the pathogen, and a number of soil variables may be responsible for the variance in the incidence of bacterial wilt in the main potato growing regions. Only all of the potato-growing regions in Gujarat's Banaskantha district had high concentrations of Biovars 2, bv2T, and Race 3 of *R. solanacearum*. The results of this work will be helpful in developing a molecular methods study of *R. solanacearum* population structures with an integrated management focus.

#### COMPETING INTERESTS

Authors have declared that no competing interests exist.

#### REFERENCES

- Smith EF. A bacterial disease of the tomato, eggplant and Irish potato (*Bacillus solanacearum* Nov. sp.). USDA Bull. 1896;12(1):11-17.
- Yabuuchi E, Kosako Y, Yano I, Hotta H, Nishiuchi Y. Transfer of two *Burkholderia* and an *Alcaligenes* species to *Ralstonia* genera. Microbiol. Immunol. 1995;39:897–904.
- Wicker E, Grassart L, Coranson-Beaudu R, Mian D, Guilbaud C, Fegan M. *Ralstonia solanacearum* strains from Martinique (French West Indies) exhibiting a new pathogenic potential. Appl. Environ. Microbiol. 2007;71:6790–6801.
- Phondekar UR, Bhagwat RG, Sahane PA, Bhagwat SR. Screening of potato varieties against bacterial wilt caused by *R. solanacearum* under field condition in Konkan region of Maharashtra. The Pharma Innovation Journal. 2022;11(10):462-464.
- Tariang J, Majumder D. Efficacy of native fluorescent pseudomonads in management of bacterial wilt of tomato under the mid hill conditions of Meghalaya, India. International Journal of Chemical Studies. 2019;7(4):1436-1444.
- Hossain MF, Billah M, Ali MR, Parvez MSA, Zaoti ZF, Hasan SMZ, Hasan MF, Dutta AK, Khalekuzzaman M, Islam MA, Sikdar B. Molecular identification and biological control of *Ralstonia solanacearum* from wilt of papaya by natural compounds and *Bacillus subtilis*: An integrated experimental and computational study. Saudi Journal of Biological Sciences. 2021;28:6972-6986.
- Denny TP. Plant pathogenic *Ralstonia* species. In: Plant associated bacteria. S. S. Gnanamanickam, ed. Springer Publishing, Dordrecht, The Netherlands. 2006;573-644.
- Khairy AM, Tohamy MRA, Zayed MA, Ali MAS. Detecting pathogenic bacterial wilt disease of potato using biochemical markers and evaluate resistant in some cultivars. Saudi Journal of Biological Sciences. 2021;28:5193-5203.
- Salvi PP. Biology, ecology and management of bacterial wilt of brinjal

- incited by *Ralstonia solanacearum* (smith) yabuuchi. Ph. D. (Agri.) Thesis submitted Dr. B.S.K.K.V., Dapoli (MS);2020.
10. Kumar R, Ramachandran E, Yadav K. Phylotype analysis of *Ralstonia Solanacearum* causing bacterial wilt in eggplants in orissa in India. International Journal of Trend in Scientific Research and Development. 2019;3(3):1-3.
  11. Sharma P, Lakpale N. Diseases resistance in potato: genetic resources respond to bacterial wilt and viral diseases complex. International Journal of Current Microbiology and Applied Sciences. 2020;9(4):1846-1850.
  12. Tam HN, Thanh L, Phap TQ, Tung TT, Danh LT, Nga NTT. Isolation and virulent evaluation of *Ralstonia solanacearum* cause the bacterial wilt in Chrysanthemum (*Chrysanthemum* Sp.) from mekong delta and lam dong province. An International Journal of Biological Forum. 2019;11(1):101-106.
  13. Bawari MR, Narendrap T. *In-vitro* evaluation of bioagents and antibiotics against *Ralstonia solanacearum* causing brinjal wilt. Journal of Pharmacognosy and Phytochemistry. 2019;8(5):2038-2041.
  14. Salvi PP, Borkar PG, Kadam JJ, Solanki MS. Physiological and biochemical characterization of *Ralstonia solanacearum* inciting bacterial wilt of brinjal. International Journal of Chemical Studies. 2020;8(2):397-401.
  15. Liu Q, Tarn R, Lyncch D, Niel MS. Physico-chemical properties of dry matter and starch from potatoes grown in Canada. Food Chem. 2007;105:897- 907.
  16. Hayward AC. Characteristics of *Pseudomonas solanacearum*. J. App. Bacteriol. 1964;27(2):265-277.
  17. He LY, Sequeira L, Kelman A. Characteristics of strains of *Pseudomonas solanacearum* from China. Plant Dis. 1983;67:1357-1361.
  18. Buddenhagen I, Sequeira L, Kelman A. Designation of races in *Pseudomonas solanacearum*. Phytopathology. 1962; 52:726.
  19. Winstead NN, Kelman A. Inoculation techniques for evaluating resistance to *Pseudomonas solanacearum*, Phytopathology. 1952;42:628-634.
  20. Rahman MF, Islam MR, Rahman T, Meah MB. Biochemical characterization of *Ralstonia solanacearum* causing bacterial wilt of brinjal in Bangladesh. Journal of Progressive Agriculture. 2010;21(1&2):9-19.
  21. Abdou M M M, El-Habbaa G M, Mohamed F G, Badr A A. Virulence of *Ralstonia solanacearum* the causal of potato brown rot disease under Egyptian conditions. Journal of Annals of Agricultural Science, Moshtohor. 2012; 50(1):59-67.
  22. Deepa J, Girija D, Sally K, Mathew P A, Nazeem T D, Sukumara V. Detection of *Ralstonia solanacearum* race 3 causing bacterial wilt of solanaceous vegetables in kerala, using random amplified polymorphic DNA (RAPD) analysis. Journal of Tropical Agriculture. 2003;41:33-37.
  23. Boucher CA, Gijsegem VF, Barberis PA, Arlat M, Zischek C. *Pseudomonas solanacearum* genes controlling both pathogenicity on tomato and hypersensitivity on tobacco are clustered. Journal of Bacteriology. 1987;169:5626-5632.
  24. Zubeda C, Hamid R. Isolation and characterization of *Ralstonia solanacearum* from infected tomato plants of Soan Skesar valley of Punjab. Pakistan Journal of Botany. 2011;43:2979-85.
  25. Bhanwar RR, Tiwari PK, Thakur AK. Screening of brinjal cultivars against bacterial wilt disease under artificially inoculated conditions at Bastar Plateau Zone of Chhattisgarh. International Journal of Current Microbiology and Applied Sciences. 2019;8(2):3113-3119.
  26. Kumar V, Singh BM, Sugha SK. Variation in isolates of *Pseudomonas solanacearum* from Himachal Pradesh. Indian. Journal of Mycology and Plant Pathology. 1993;23:232-236.
  27. Bora GC, Devi J, Gogoi S, Deka A, Bhattacharyya AK, Paswan L. Evaluation of varieties of brinjal (*Solanum melongena* L.) for resistance to bacterial wilt in North East India. Current Advances in Agricultural Sciences. 2011;3(1):36-38.
  28. Ahmed NN, Islam MR, Hossain MA, Meah MB, Hossain MM. Determination of races and biovars of *Ralstonia solanacearum* causing bacterial wilt disease of potato. Journal of Agricultural Science. 2013;5(6):86-93.
  29. Basha JCR, Manjula CP, Prasannakumar MK. Characterization of isolates of *Ralstonia solanacearum* into biovars based on their ability to oxidize and utilize

- disaccharides and hexahydric alcohols. International Journal of Current Microbiology and Applied Sciences. 2017;6(7):1754-1759.
30. Chandrashekara KN, Prasannakumar MK, Deepa M, Vani A, Khan ANA. Prevalence of races and biotypes of *Ralstonia solanacearum* in India. Journal of Plant Protection Research. 2012;52(1):53-58.
31. Janse JD. Infra and intraspecific classification of *Pseudomonas solanacearum* strains, using whole cell fatty acid analysis. Systematic and Applied Microbiology. 1991;14:335–345.

---

© 2023 Joshi et al.; This is an Open Access article distributed under the terms of the Creative Commons Attribution License (<http://creativecommons.org/licenses/by/4.0>), which permits unrestricted use, distribution, and reproduction in any medium, provided the original work is properly cited.

*Peer-review history:*

*The peer review history for this paper can be accessed here:*  
<https://www.sdiarticle5.com/review-history/111181>